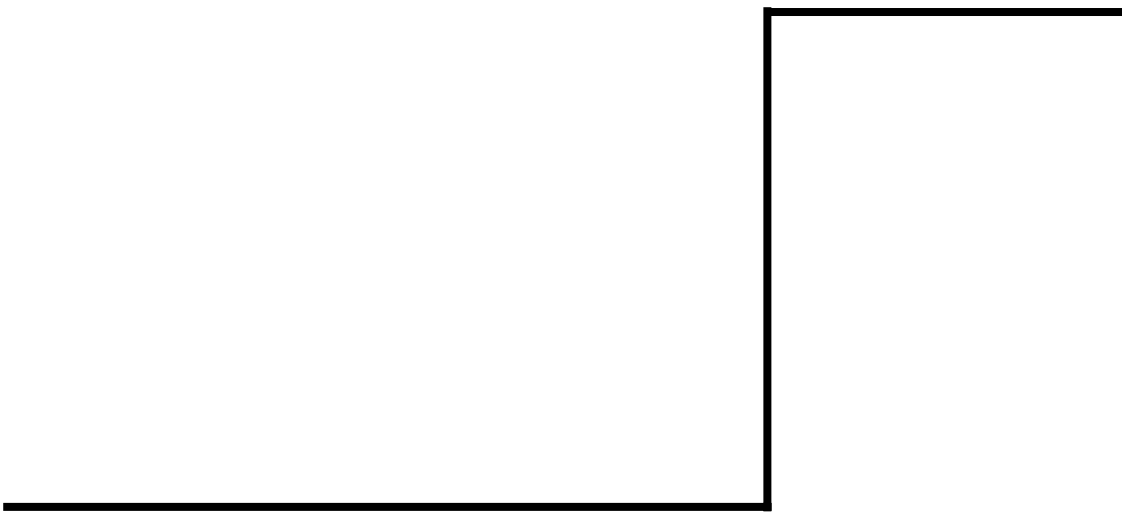


USB Cable

Of

MSR206 Series Magnetic Card Reader/Writer



Device Driver Installation Guide

UDN PM035 Rev. B

Sep-10-2004


CONTENTS

1.	System Requirements.....	2
2.	Driver Installation	2
	For Windows XP.....	2
	For Windows 2000.....	5
	For Windows 98.....	9
	For Linux	12
3.	Driver Un-installation	13
	For Windows.....	13
	For Linux	13

Product names mentioned herein are trademarks and/or registered trademarks of their respective companies.

1. System Requirements

Before you use the USB devices, make sure your computer is an IBM PC-compatible with the following minimum system requirements:

1. Intel-compatible 486DX-66 MHz CPU or higher
2. One standard USB port (4-pin) and has the symbol 
3. Either the following operating systems:
Windows 95 OSR2.1 (B version) with USB version 1214, Windows 98, Windows 98 SE, Windows 2000, Windows XP and RedHat Linux 7.3 (kernel 2.4.18-3), RedHat Linux 8 (kernel 2.4.18-14), RedHat Linux 9 (kernel 2.4.20-8.)

2. Driver Installation

Follow the steps below on installing the USB devices for the first time:

1. Power on computer where you will connect the USB devices and make sure that the USB port is enabled and working properly.
2. Plug in the USB device signal cable into the USB port and Windows will detect an USB Device and run the **Found New Hardware Wizard (For Windows 2000 / XP)** or **Add New Hardware Wizard (For Windows 98)** to assist you in setting up the new USB Composite Device.
3. Insert the shipping disk into the CDROM device.

Note, before beginning driver installation, please make sure the old driver had been removed.

For Windows XP



1. Select **Install from a list or specific location (Advanced)**.
 2. Click **Next**.
-



1. Specify the location of USB driver. **(For example: ..\USB Driver\WIN98_ME_2K_XP)**
 2. Click **Next**.
-

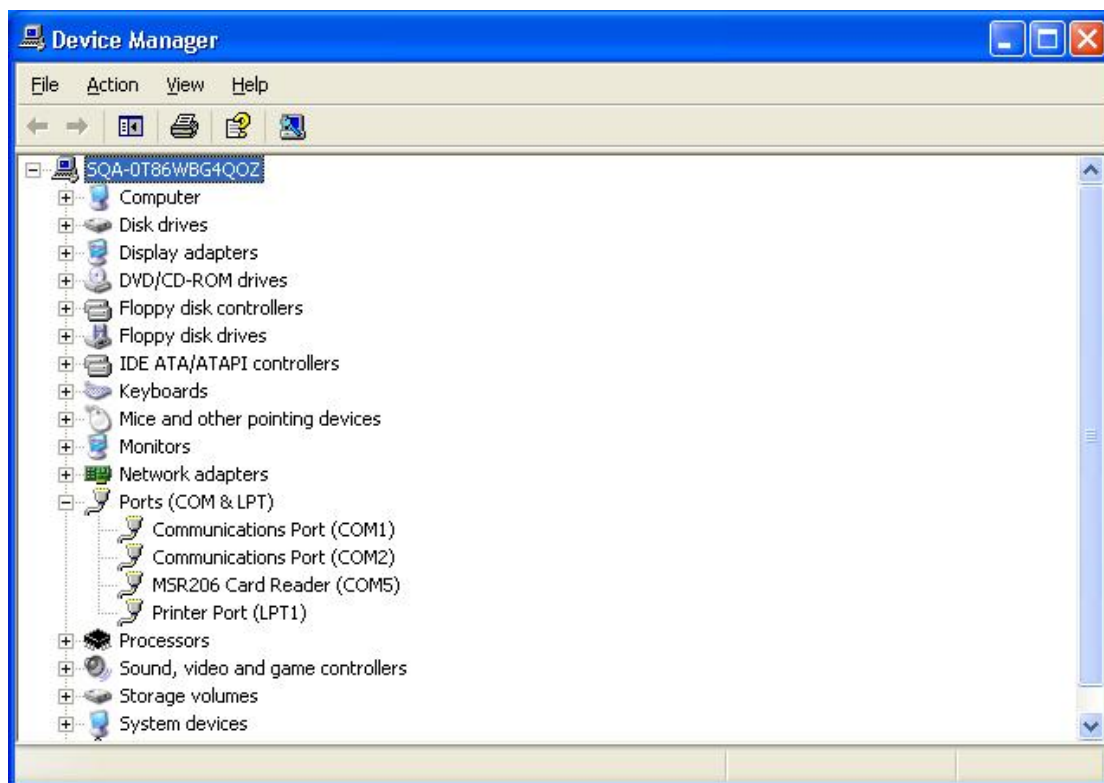
At the time of this product's release, Microsoft strongly encouraged companies to submit their hardware solutions for certification. If a hardware device driver is not submitted, or does not qualify, for Microsoft certification, a warning message appears. You may see this warning message when installing this driver or update. If you do, you may choose to click the Continue Anyway button. We have tested this driver or update on Windows XP, and it does not impair or destabilize your computer.



1. Click **Continue Anyway**.
-



1. Windows will detect a new USB device. **For example: MSR206 Card Reader.**
 2. Click **Finish**.
-



1. If no any virtual COM port is assigned to this device, you may need to re-install the driver.
-

For Windows 2000



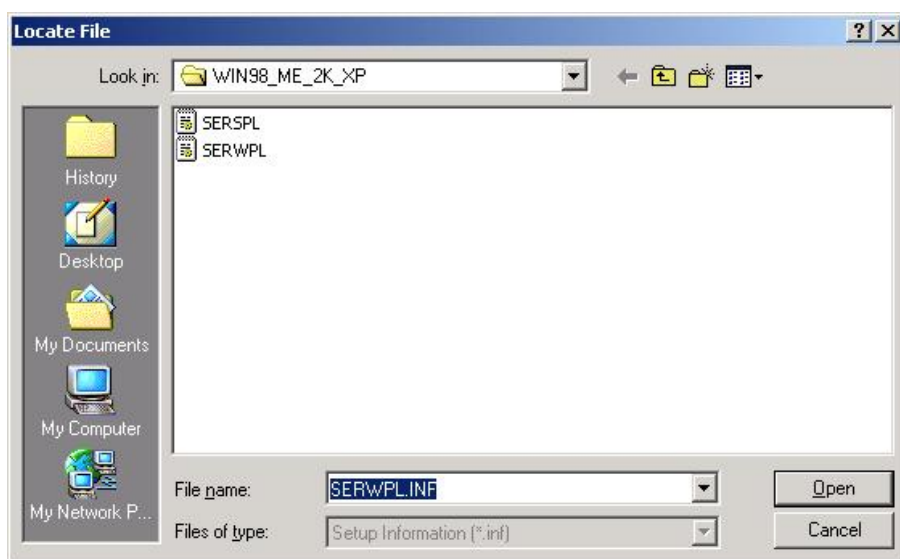
1. Click **Next**.
-



1. Select **Search for a suitable driver for my device**.
 2. Click **Next**.
-



1. Specify the location.
 2. Click **Next**.
-



1. Click **Browse** to specify the location of USB driver. (For example: **..USB Driver\WIN98_ME_2K_XP**)

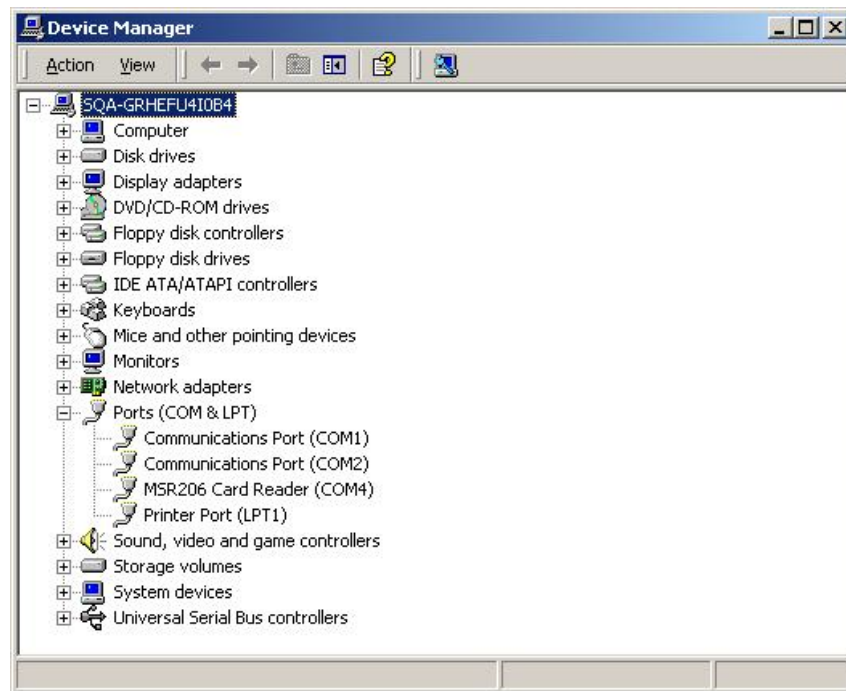
2. Select the file **SERWPL** and then click **Open**.
 3. Click **OK**.
-



1. Click **Next** to install the driver.
-



1. Windows will detect a new USB device. **For example: MSR206 Card Reader.**
 2. Click **Finish**.
-



1. If no any virtual COM port is assigned to this device, you may need to re-install the driver.
-

For Windows 98



1. Click **Next**.
-



1. Select **Search for the best driver for your device**.
 2. Click **Next**.
-



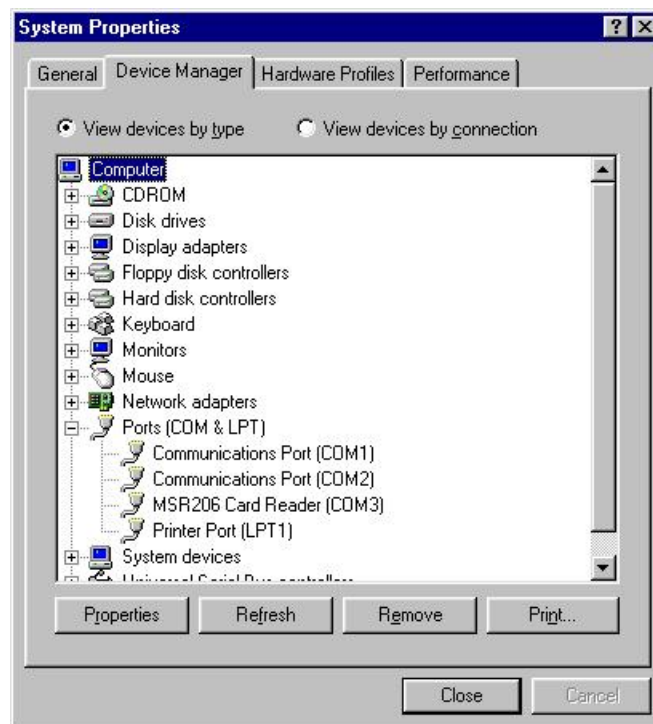
1. Specify the location of USB driver. **(For example: \USB Driver\WIN98_ME_2K_XP)**
 2. Click **Next**.
-



1. You can see a new device is detected. **For example: MSR206 Card Reader.**
 2. Click **Next** to install the driver.
-



1. Click **Finish**.
 2. When finished, there is one more driver has to be installed.
-



1. If no any virtual COM port is assigned to this device, you may need to re-install the driver.
-

For Linux

1. Under root folder, create a new folder and copy MSR206 USB driver source code to new folder (Redhat73 for kernel 2.4.18-3; Redhat8 for kernel 2.4.18-14; Redhat9 for kernel 2.4.20-8).
2. Open terminal mode and login root user.
3. Go to the new folder and then type "make inst" to compile the MSR206 USB driver source code. This will create a file: "msr206.o", and install the MSR206 Linux driver into Linux.
4. Plug the MSR206 cable into USB port and key-in "dmesg", it will show "PL-2303 converter now attached to ttyUSB0 (or usb/tts/0 for devfs)". This means MSR206 is now working under Linux.

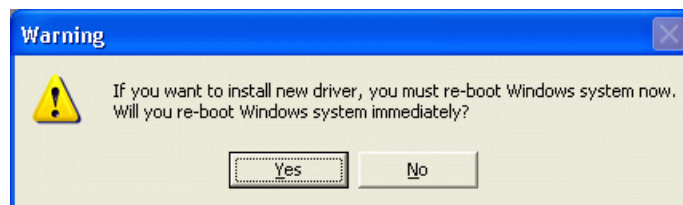
Note1: User must login into root user in order to successfully compile and install.

Note2: User can test MSR206's communication on "minicom" program. Please use "man minicom" for further information.

3. Driver Un-installation

For Windows

You can uninstall the USB driver by executing **Uninstall Program: DrvRemover.exe** in the directory of USB Driver and click the **OK** button and then re-boot PC to accomplish the un-installation.



For Linux

1. Login as root user.
2. Enter MSR206 USB driver's source directory.
3. Type "make uninstd" to unload the driver.